

## Disassembly Procedure

*Please follow the information provided in this section to perform the complete disassembly procedure of the notebook. Be sure to use proper tools described before.*

**A**SUS M6000 Series Notebook consists of various modules. This chapter describes the procedures for the complete notebook disassembly. In addition, in between procedures, the detailed disassembly procedure of individual modules will be provided for your service needs.

The disassembly procedure consists of the following steps:

- Battery Module
- HDD Module
- Second Memory Module
- Optical Drive Module
- CPU Module
- Keyboard Module
- First Memory Module
- Mini PCI Module
- LCD Module
- Top Case Module
- Motherboard Module
- Bottom Case Module

---

BATTERY

---

### Battery Module

The illustration below shows how to remove the battery module.

1. Press latch to open the battery module, then lift battery module away from the system.



---

HDD MODULE

---

### HDD Module

The illustrations below show how to remove the HDD module from the notebook.

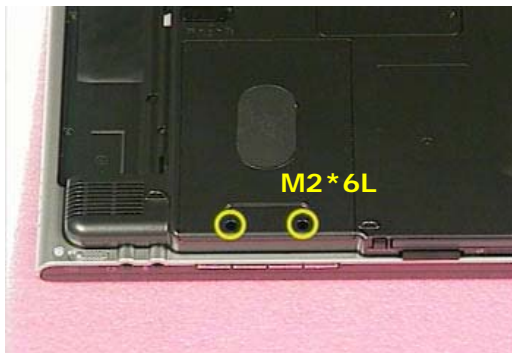
---

HDD MODULE  
REMOVAL

---

#### Removing HDD Module

Remove 2 screws(M2\*6L(K)), then remove the HDD cover and pull the hard disk module toward the direction of the arrow and lift it up and take it out.



---

SECOND  
MEMORY  
MODULE

---

### Second Memory Module

The M6000 Series Notebook do not have onboard RAM. There are two SO-DIMM sockets for installing SO-DIMM RAM. It can upgrade the total memory size up to 1GB with a 512MB module on each socket.

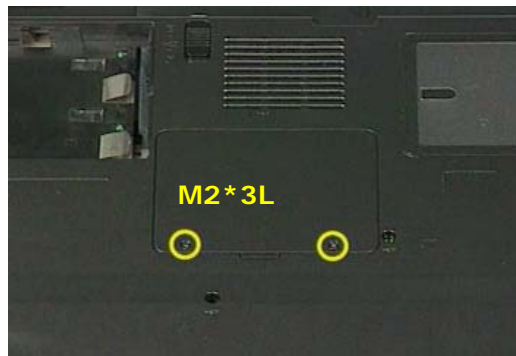
---

MEMORY  
REMOVAL

---

Removing Memory module

1. Remove 2 screws(M2\*3L(K) ), then take the memory DIMM cover away.



---

OPTICAL  
DRIVE  
REMOVAL

---

### Optical Drive Module

Press latch here then pull it out.



CPU MODULE  
REMOVAL

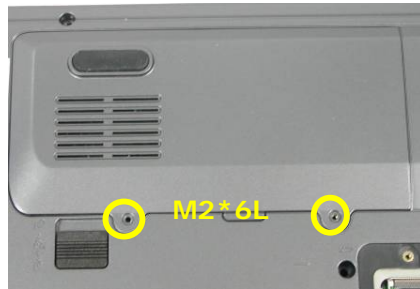
CPU Module

The illustrations below show how to remove the CPU module from the notebook.

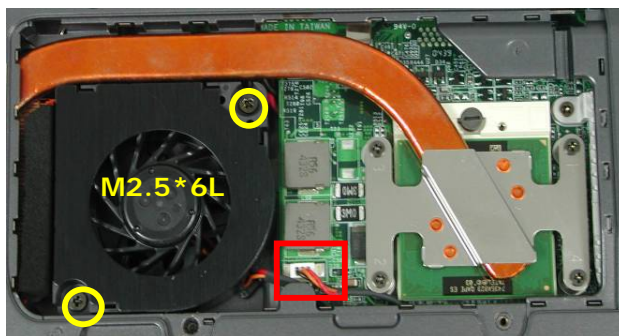
CPU  
REMOVAL

Removing CPU Module

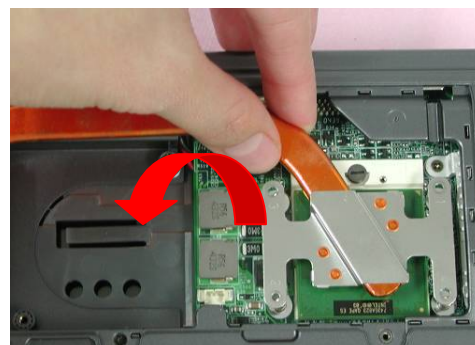
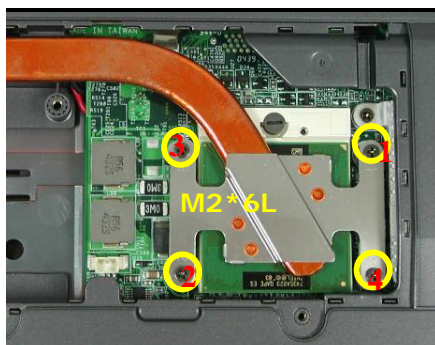
1. Remove 2 screws(M2\*6L(K)) and take away the CPU cover.



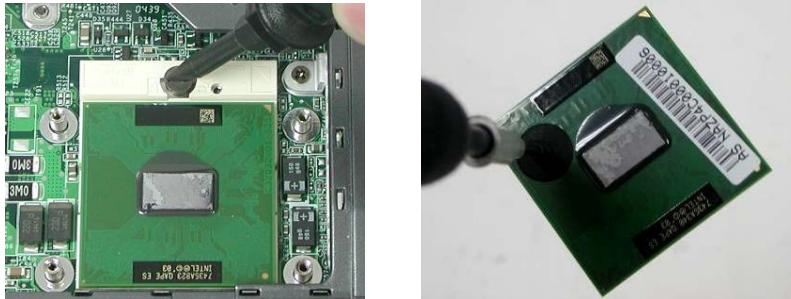
2. Remove 2 screws(M2.5\*6L(K)) and disconnect the FAN connector and then take away the Fan Module.



3. Remove the 4 screws (M2\*6L(K)) by order upon the thermal module and take away the CPU heat sink module gently



- Turn the non-removable screw here 180 degrees counter-clockwise to loosen the CPU and take the CPU away



**Note: If thermal module has no thermal pad on it, please plus a thermal pad on the CPU die before assembling.**

## Keyboard Module

The illustration of below shows how to remove the keyboard

Removing Keyboard Cover

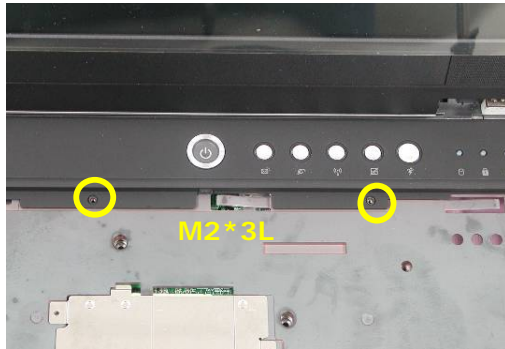
- Remove 2 screws (M2.5\*6L(K)) on the bottom case.



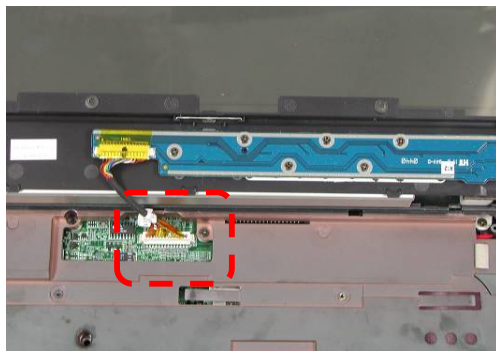
- Unlock 3 keyboard latches then pull out the keyboard forward and lay the keyboard on the front side.



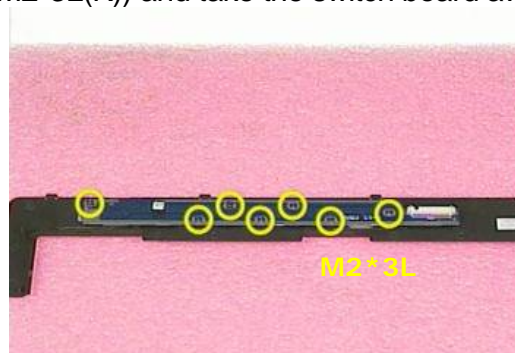
3. Remove 2 screws (M2\*3L(K)) on the keyboard cover , then use tweezers to disconnect the keyboard two covers and lift it up.



4. Loosen the switch board cable and take the keyboard cover away , then remove the switch cable.



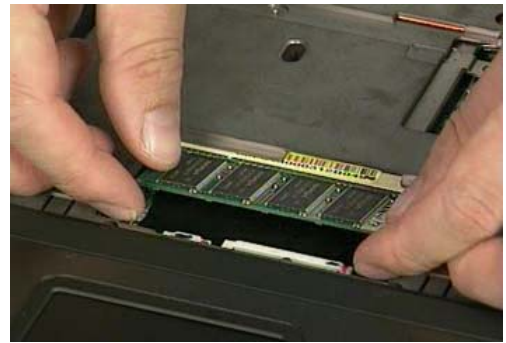
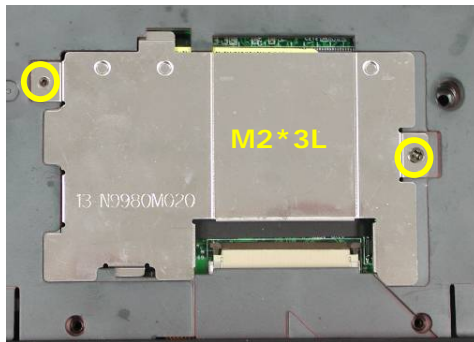
5. Remove 7 screws (M2\*3L(K)) and take the switch board away.



FIRST  
MEMORY  
MODULE  
REMOVAL

### First Memory Module

The first memory module is under keyboard .Remove 2 screws (M2\*3L(K)) ,and take away the memory bracket, then open the two latches to pop up memory module at 45 degrees angle then pull it out .



WIRELESS  
LAN MODULE

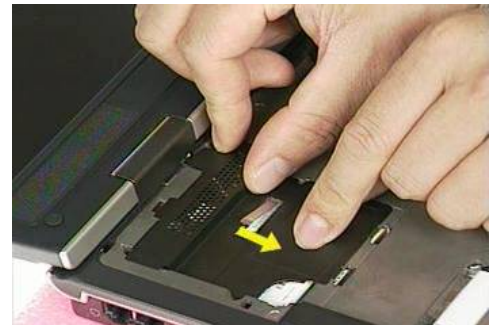
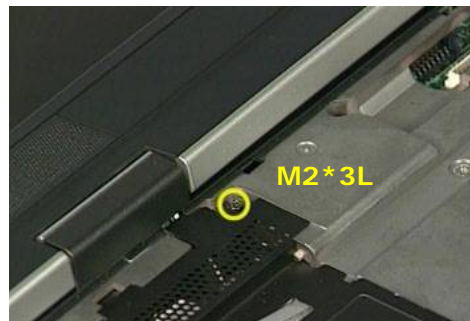
### Mini PCI Module

*This slot usually has Wireless LAN module when leaving the factory, this slot is for optional system upgrade.*

WIRELESS  
LAN  
REMOVAL

Removing Wireless LAN Module

1. Remove 1 screw(M2\*3L(K)), then take the mini-PCI cover off.



2. Disconnect 2 antenna cables, then open two latches to pop up wireless LAN module at 45 degrees angle and pull it out.



## LCD Module

The illustrations below show how to remove and disassemble the LCD module. The module contains LCD panel, Inverter board, LCD Hinge bracket, Hinge cover, LCD front cover, LCD back cover

### Removing LCD Module

1. Disconnect LCD coaxial cable and Inverter cable, then detach the left hinge cover and the right hinge cover.



2. Remove 2 screws (M2.5\*6L(K)) at bottom case.



3. Remove 2 pads and 2 screws (M2\*3L(K)) at rear side.





4. Remove 2 screws(M2.5\*6L(K)) at top side, then lift the LCD module away from the system.



---

L C D  
D I S A S S E M B L Y

---

**Disassembling LCD Module**

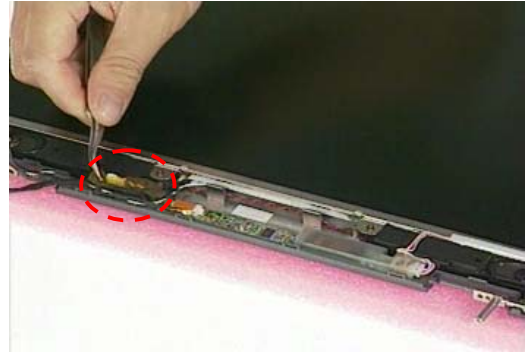
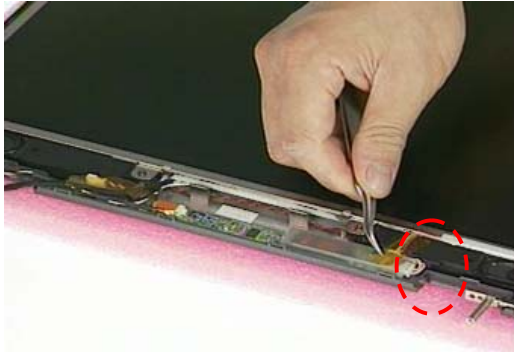
1. Remove 4 rubber pads and 4 screws(M2.5\*6L(K)) from LCD module.



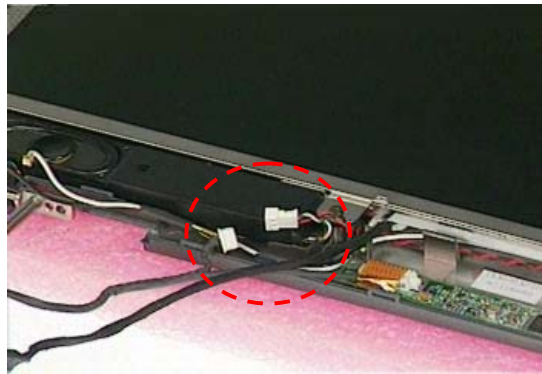
2. Prying the inside edges of the top front bezel, then separate it from LCD back cover and take LCD front bezel away.



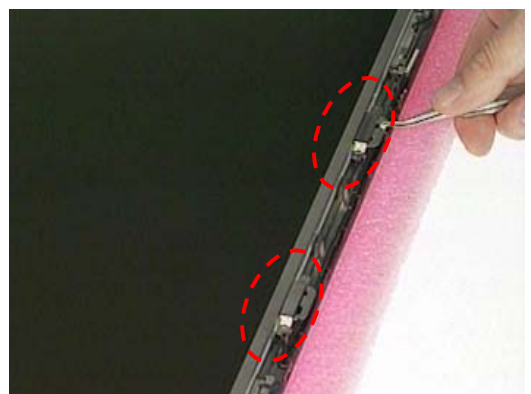
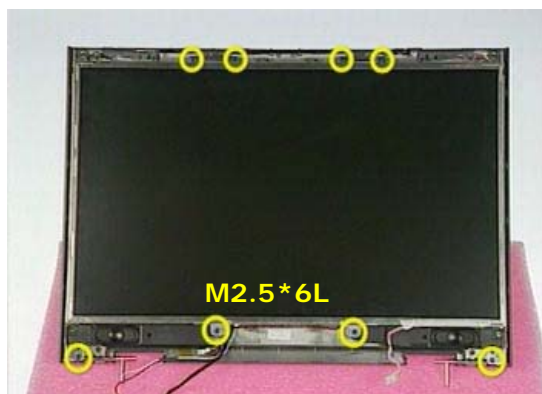
3. Remove 1tape and the other tape here.



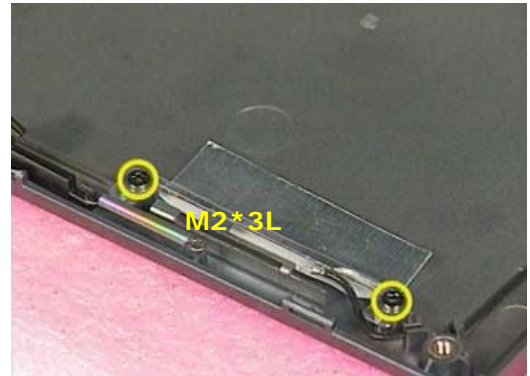
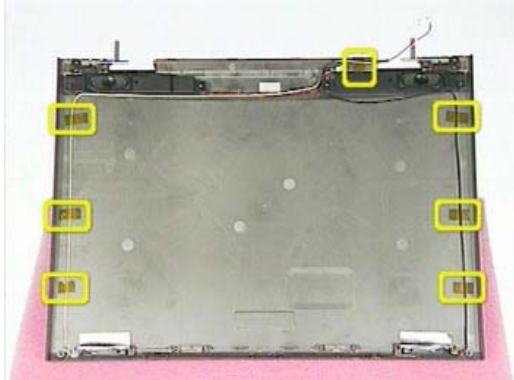
4. Disconnect the speaker cable and LCD cable then take Inverter board off.



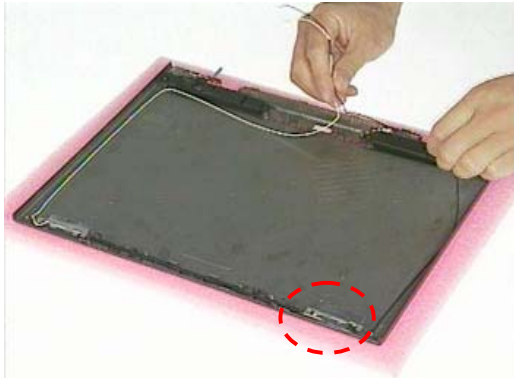
5. Remove 8 screws(M2.5\*6L(K)) and 2 fixed slices off , then take the LCD Bracket away.



6. Remove 7 tapes 、 2 screws and 2 screws(M2\*3L(K)) on the other side.



7. Detach the right & left antenna and its cable.



8. Remove the speaker cable, then remove 1 screw(M2\*3L(K)) and 1 screw on the other side. And take two speakers away



TOP CASE  
MODULE

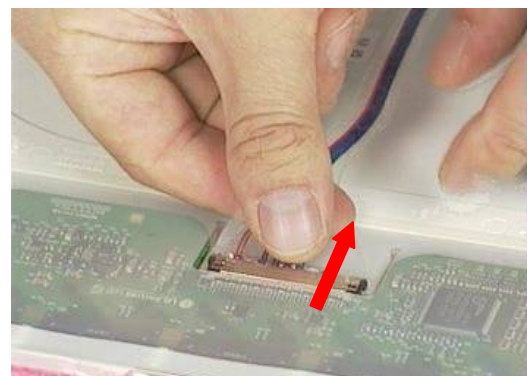
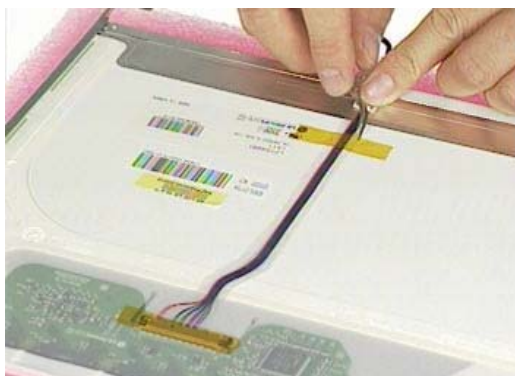
9. Detach the LCD hooker and spring then take it away.



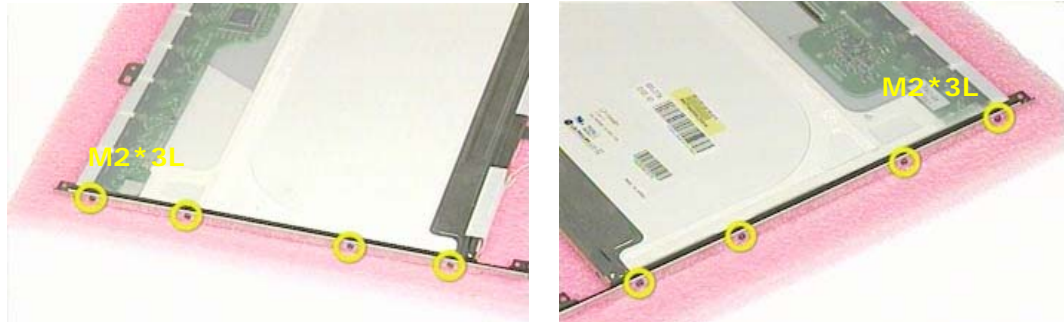
10. Remove 1 screw (M2.5\*4L(K)) and 1 screw on the other side, then take right and lift hinge off.



11. Remove 2 tapes and disconnect coaxial cable then take it away.



12. Finally, Remove 4 screws(M2\*3L(K)) on the right LCD bracket , and 4 screws on the left side to disassemble LCD brackets.



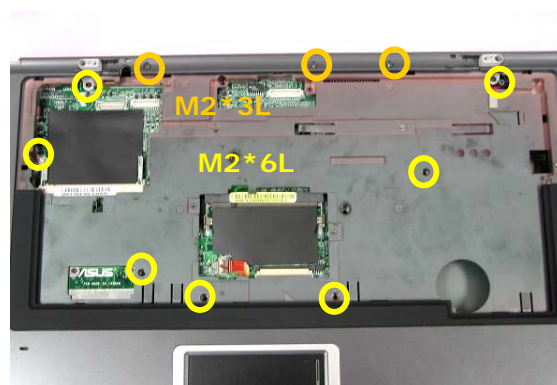
TOP CASE  
MODULE  
REMOVE

### Top Case Module

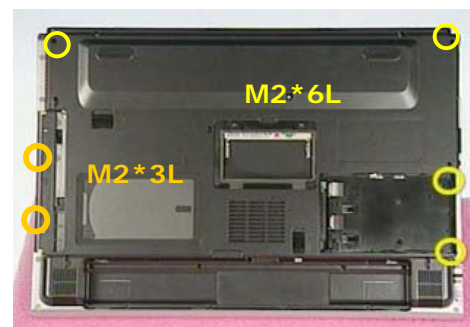
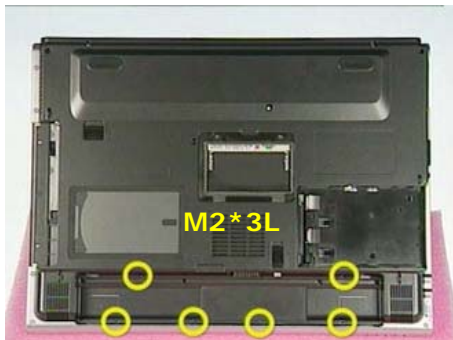
The illustrations below show how to disassemble and remove the top case module of the notebook.

Removing Top Case Module

1. Remove 3 screws(M2\*3L\*(K)) pads and 7 screws(M2\*6L\*(K)) on top side.



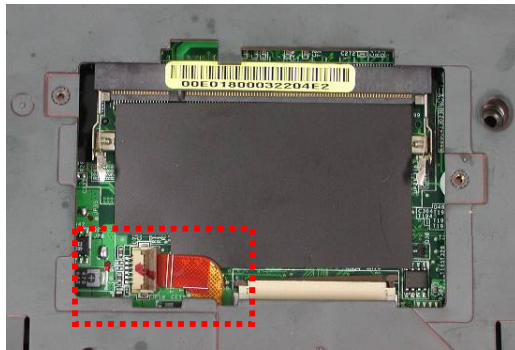
2. Remove 17 screws (M2\*3L(K)+M2\*6L(K)) on bottom case.



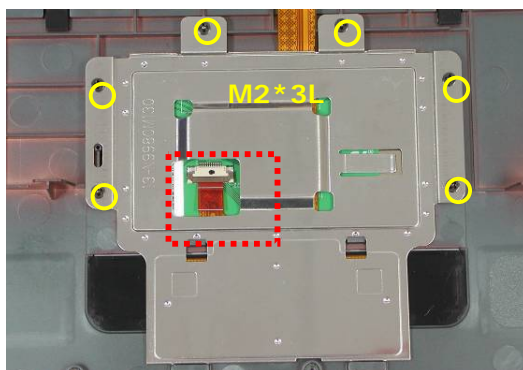


Removing touch pad

3. Loosen the touch pad FPC cable then separate the top case module from the bottom case module.



4. Disconnect touch pad FPC cable and remove 6 screws(M2\*3L(K)) then take touch pad bucket off and take touch pad away.

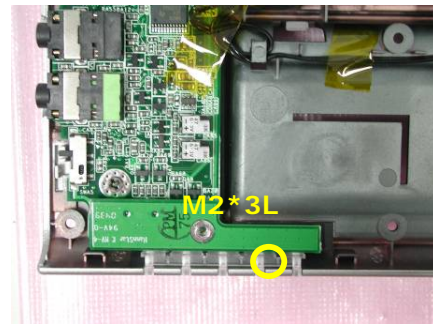


## Motherboard module

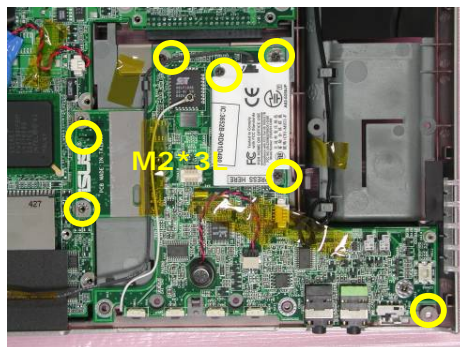
The illustrations below show how to disassemble and remove the Motherboard module

### Removing Motherboard Module

1. Remove the audio DJ and 1 screw (M2\*3L(K)) then take the LED board away.



2. Remove 7 screws (M2\*3L(K)) and 2 tapes then disconnect modem cable then take the modem board.



3. Disconnect the speaker cable and pull out the audio board upward then take it away.



MOTHERBOARD  
MODULE

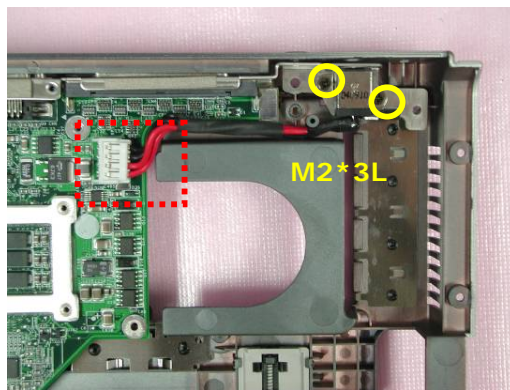
MDC MODULE  
REMOVAL

MOTHERBOARD  
REMOVAL

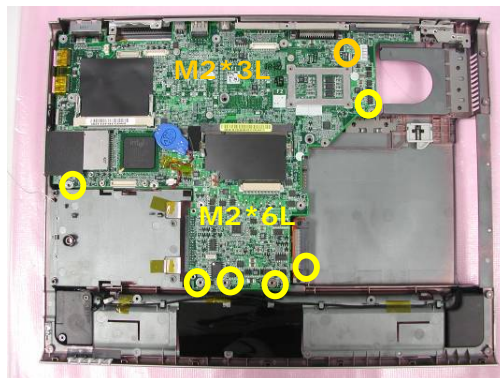
4. Remove 1 tape then take the MIC away.



5. Remove 2 screws (M2\*3L(K)) and disconnect the DC IN cable then take away the DC IN jack.



6. Remove 6 screws(M2\*6L(K)) & 1 screw(M2\*3L(K)) and take the motherboard away.

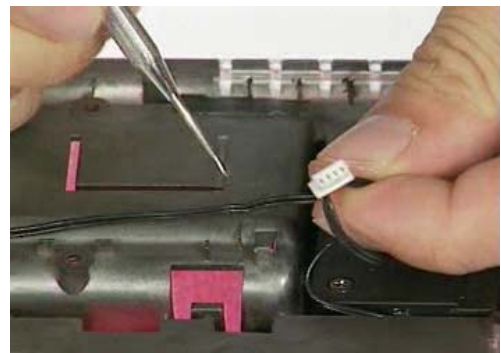
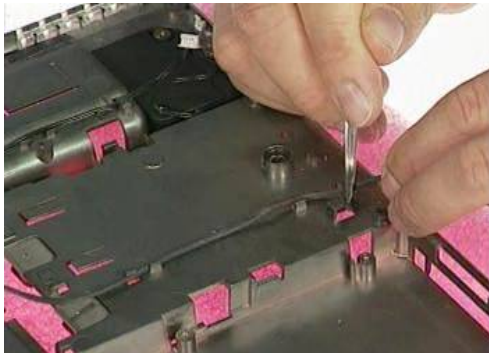




## Bottom Case Module

The illustrations below show how to disassemble and remove the bottom case module of the notebook.

1. Use tweezers to lift modem cable up then take it away



2. Finally ,remove 1 screw (M2\*6L(K)) and 1 screw on the other side and then take 2 speakers away.

